



Certificate of Analysis

Powered by Confident Cannabis

ReLive Everyday, LLC

256 N. Lincoln Ave, STE 7
Lebanon, PA 17046

Sample: 2111DBL0101.10692

METRC Sample:
Lot #: 210511

Strain: N/A

Ordered: 11/09/2021; Sampled: 11/09/2021; Completed: 11/18/2021

Peppermint Tincture - 1200mg

Ingestible, Tincture, Other



Pesticides



Microbials



Mycotoxins



Heavy Metals



Foreign Matter



Solvents

Terpenes

Analyzed by 300.13 GC/FID and GC/MS



83.721 mg/unit
Total Terpenes

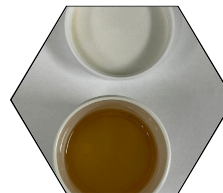
Compound	LOQ mg/unit	Mass mg/unit	Mass mg/g	Relative Concentration
Eucalyptol	2.574	20.724	0.727	
δ-Limonene	2.574	12.438	0.436	
cis-Ocimene	1.673	10.247	0.360	
β-Myrcene	2.574	10.214	0.358	
β-Pinene	2.574	10.214	0.358	
trans-Ocimene	0.901	8.698	0.305	
α-Pinene	2.574	5.173	0.182	
Geraniol	2.574	3.064	0.108	
β-Caryophyllene	2.574	2.949	0.103	
α-Bisabolol	2.574	<LOQ	<LOQ	
α-Humulene	2.574	<LOQ	<LOQ	
α-Terpinene	2.574	<LOQ	<LOQ	
Camphene	2.574	<LOQ	<LOQ	
Caryophyllene Oxide	2.574	<LOQ	<LOQ	
cis-Nerolidol	1.673	<LOQ	<LOQ	
δ-3-Carene	2.574	<LOQ	<LOQ	
γ-Terpinene	2.574	<LOQ	<LOQ	
Guaiol	2.574	<LOQ	<LOQ	
Isopulegol	2.574	<LOQ	<LOQ	
Linalool	2.574	<LOQ	<LOQ	
p-Cymene	2.574	<LOQ	<LOQ	
Terpinolene	2.574	<LOQ	<LOQ	
trans-Nerolidol	0.901	<LOQ	<LOQ	

Cannabinoid Relative Concentration

Analyzed by 300.18 UHPLC/PDA

Compound	LOQ mg/unit	Mass mg/unit	Mass mg/g	Relative Concentration
CBC	1.543	<LOQ	<LOQ	
CBCa	1.543	<LOQ	<LOQ	
CBD	1.543	1263.590	44.336	
CBDa	1.543	<LOQ	<LOQ	
CBDV	1.543	6.389	0.224	
CBDVa	1.543	<LOQ	<LOQ	
CBG	1.543	274.782	9.641	
CBGa	1.543	<LOQ	<LOQ	
CBL	1.543	<LOQ	<LOQ	
CBN	1.543	<LOQ	<LOQ	
Δ8-THC	1.543	<LOQ	<LOQ	
Δ9-THC	1.543	<LOQ	<LOQ	
THCa	1.543	<LOQ	<LOQ	
THCV	1.543	<LOQ	<LOQ	
THCVa	1.543	<LOQ	<LOQ	

1 Unit = Peppermint Tincture - 1200mg, 28.5g
Total THC = 0.877 x THC-A + Δ9-THC + Δ8-THC; Total CBD = CBDa * 0.877 + CBD



Benjamin G.M. Chew, Ph.D.
Benjamin G.M. Chew, Ph.D.
Laboratory Director

Glen Marquez
Glen Marquez
Quality Control



4439 Polaris Ave
Las Vegas, NV
(702) 728-5180

www.dblabslv.com

This report is considered highly confidential and the sole property of the customer. DB Labs will not discuss any part of this study with personnel other than those authorized by the client. The results described in this report only apply to the samples analyzed. The reported result is based on a sample weight with the applicable moisture content for that sample. LOQ = Limit of Quantitation. Pesticide LOQ = Instrument Limit of Quantitation. NA = Not Analyzed. ND = Not Detected. NR = Not Reported. NT = Not Tested. PGR = Plant Growth Regulator. Unless otherwise stated all quality control samples performed within specifications established by the Laboratory. This product has been tested by DB Labs, LLC (MME# 61887736101164525768) using valid testing methodologies and a quality system as required by Nevada state law. Edibles are picked up prior to final packaging unless otherwise stated. Values reported relate only to the product tested. The uncertainty of measurement associated with the measurement result reported in this certificate is available from the organization upon request. DB Labs makes no claims as to the efficacy, safety or other risks associated with any detected or non-detected levels of any compounds reported herein. This Certificate shall not be reproduced except in full, without the written approval of DB Labs.



Certificate of Analysis

Powered by Confident Cannabis

ReLive Everyday, LLC

256 N. Lincoln Ave, STE 7
Lebanon, PA 17046

Sample: 2111DBL0101.10692

METRC Sample:
Lot #: 210511

Strain: N/A

Ordered: 11/09/2021; Sampled: 11/09/2021; Completed: 11/18/2021

Peppermint Tincture - 1200mg

Ingestible, Tincture, Other



Pesticides

Analyzed by 300.9 LC/MS/MS and GC/MS/MS

Pass

Compound	LOQ	Limit	Status
	PPB	PPB	
Abamectin	10	200	Pass
Acequinocyl	10	4000	Pass
Bifenazate	10	400	Pass
Bifenthrin	10	100	Pass
Cyfluthrin	10	2000	Pass
Cypermethrin	10	1000	Pass
Daminozide	10	800	Pass
Dimethomorph	10	2000	Pass
Etoxazole	10	400	Pass
Fenhexamid	10	1000	Pass
Flonicamid	10	1000	Pass
Fludioxonil	10	500	Pass
Imidacloprid	10	500	Pass
Myclobutanil	10	400	Pass
Paclobutrazol	10	400	Pass
Piperonyl Butoxide	10	3000	Pass
Pyrethrins	10	2000	Pass
Quintozene	10	800	Pass
Spinetoram	10	1000	Pass
Spinosad	10	1000	Pass
Spirotetramat	10	1000	Pass
Thiamethoxam	10	400	Pass
Trifloxystrobin	10	1000	Pass
Plant Growth Regulators	10	50	Pass

Microbials

Analyzed by 300.1 Plating/QPCR

Pass

Quantitative Analysis	LOQ	Limit	Status
	CFU/g	CFU/g	
Aerobic Bacteria	900	100000	Pass
Bile-Tolerant Gram-Negative Bacteria	90	1000	Pass

Qualitative Analysis	Detected or Not Detected	Status
E. Coli	Not Detected	Pass
Salmonella	Not Detected	Pass

Mycotoxins

Analyzed by 300.2 Elisa

Pass

Mycotoxin	LOQ	Limit	Status
	PPB	PPB	
Aflatoxins	4.0	20.0	Pass
Ochratoxin A	2.0	20.0	Pass

Heavy Metals

Analyzed by 300.8 ICP/MS

Pass

Element	LOQ	Limit	Status
	PPB	PPB	
Arsenic	58	2000	Pass
Cadmium	58	820	Pass
Lead	58	1200	Pass
Mercury	58	400	Pass

Residual Solvents

Analyzed by 300.13 GC/FID and GC/MS

Pass

Compound	LOQ	Limit	Status
	PPM	PPM	
Butanes	58	500	Pass
Ethanol	58	1000	Pass
Heptanes	58	500	Pass
Propane	58	500	Pass



Benjamin G.M. Chew
Benjamin G.M. Chew, Ph.D.
Laboratory Director

Glen Marquez
Glen Marquez
Quality Control



4439 Polaris Ave
Las Vegas, NV
(702) 728-5180
www.dblabslv.com

This report is considered highly confidential and the sole property of the customer. DB Labs will not discuss any part of this study with personnel other than those authorized by the client. The results described in this report only apply to the samples analyzed. The reported result is based on a sample weight with the applicable moisture content for that sample. LOQ = Limit of Quantitation. Pesticide LOQ = Instrument Limit of Quantitation, NA = Not Analyzed, ND = Not Detected, NR = Not Reported, NT = Not Tested. PGR = Plant Growth Regulator. Unless otherwise stated all quality control samples performed within specifications established by the Laboratory. This product has been tested by DB Labs, LLC (MME# 61887736101164525768) using valid testing methodologies and a quality system as required by Nevada state law. Edibles are picked up prior to final packaging unless otherwise stated. Values reported relate only to the product tested. The uncertainty of measurement associated with the measurement result reported in this certificate is available from the organization upon request. DB Labs makes no claims as to the efficacy, safety or other risks associated with any detected or non-detected levels of any compounds reported herein. This Certificate shall not be reproduced except in full, without the written approval of DB Labs.